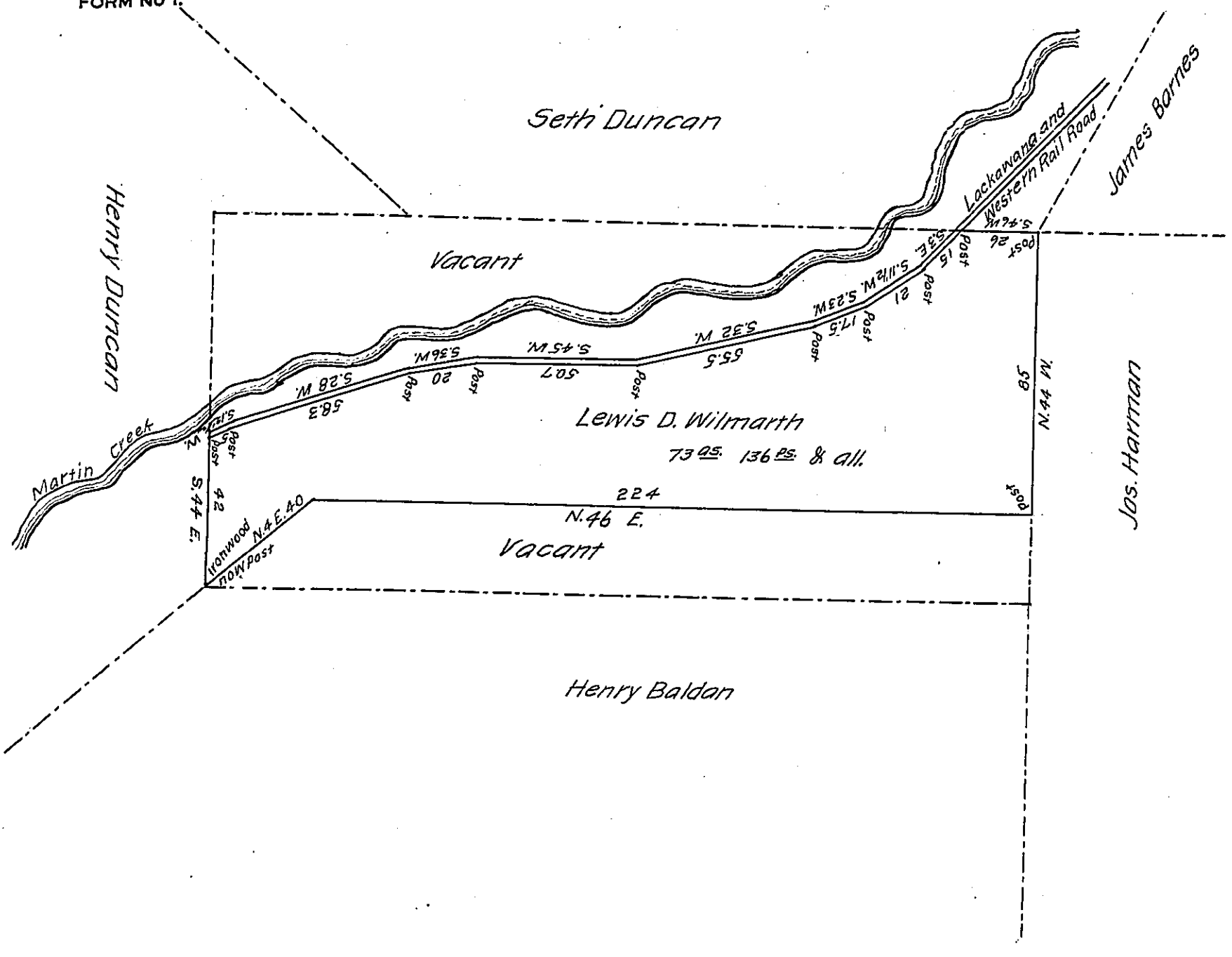


FORM NO. 1.



Draught of a tract of land situate in Harford township Susquehanna County, adjoining land surveyed for Henry Baldan, Joseph Harman James Barnes & others and extending Westerly to the Lackawana & Western Rail Road Surveyed the 20<sup>th</sup> day of April 1852. for Lewis D. Wilmarth, in pursuance of his warrant bearing date the 13<sup>th</sup> day of March A. D. 1852. Containing 73<sup>acs</sup> & 136<sup>ps</sup> with an allowance of six per Cent for roads. &c

O.S. Beebe  
Surv. for Susq & County.

To J. Porter Brawley, Esq. }  
Surveyor General. }

IN TESTIMONY that the above is a copy of the original remaining on file in the Department of Internal Affairs of Pennsylvania, made conformably to an Act of Assembly approved the 16th day of February, 1833, I have hereunto set my Hand and caused the Seal of said Department to be affixed at Harrisburg, this thirtieth day of July 1907.

*Henry Houck*  
Secretary of Internal Affairs.